

STATISTICS PRESS NOTICE – MORTALITY STATISTICS FOR NORTHERN IRELAND (2006)



MORTALITY STATISTICS FOR 2006 RELEASED

9:30am – Thursday, 22 March 2007

The number of deaths registered in Northern Ireland in 2006 was 14,500 a small increase on the 14,200 deaths registered in 2005, which was the lowest number of deaths on record.

This finding is contained in provisional 2006 mortality statistics released today by the Northern Ireland Statistics and Research Agency (NISRA).

Just over half of all deaths (53%) registered in Northern Ireland can be attributed to three specific causes of death - cancer, 26% of deaths (3,848 deaths), ischaemic heart disease, 18% of deaths (2,556 deaths) and stroke, 9% of deaths (1,326 deaths).

The number of suicides registered increased to 291 in 2006 compared to 213 in 2005. All suicides are investigated by the Coroner and of the 291 suicides recorded last year, 72 occurred in 2006 with the remainder occurring in earlier years.

The long-term trend in the overall death rate is downward. For example, if the death rates of the 1970s applied today, the number of deaths in 2006 would have been over 25,600; 11,000 more than the actual number of deaths registered.

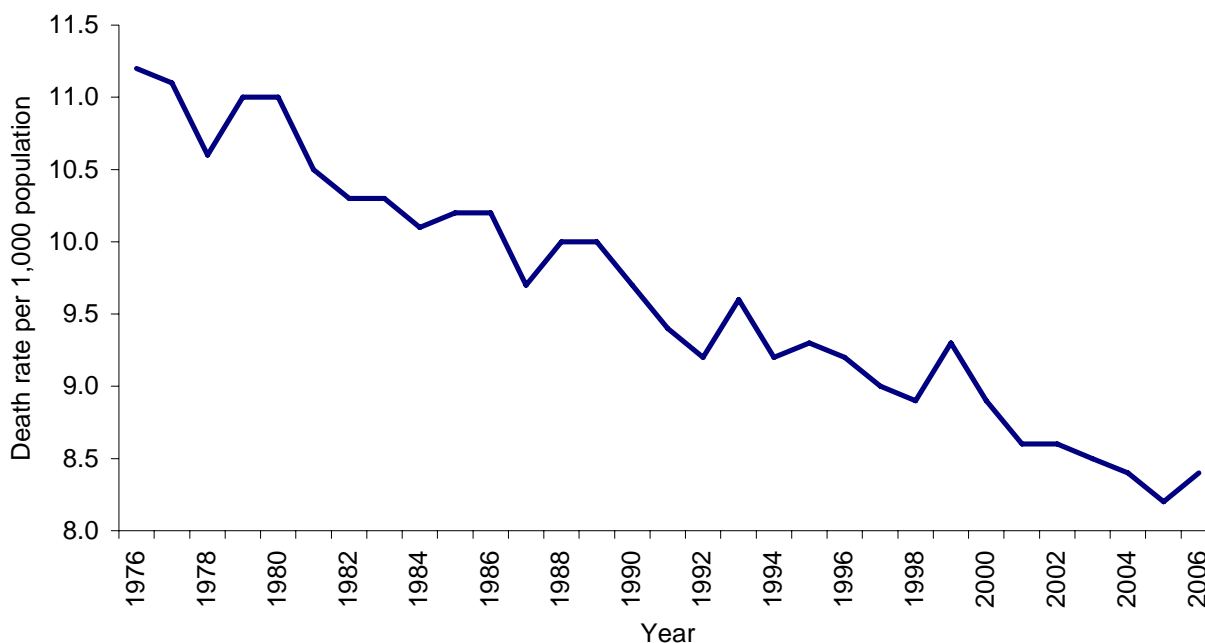
A NISRA spokesperson said that:

“Although the number of registered deaths increased between 2005 and 2006, over the longer term there has been a marked reduction in the death rate. Thirty years ago there were more deaths registered despite the fact that the population was smaller and the average age younger than it is today. Causes of death are also changing with for example death rates due to heart disease continuing to fall.”

Summary

- in 2006, there were 14,532 deaths registered in Northern Ireland, an increase of just over 300 deaths or 2% on the 14,224 deaths registered in 2005, which was the lowest figure ever recorded;
- the reduction in the number of deaths in recent years has occurred despite the population increasing in size and getting older. For example, in 1976 there were 17,000 deaths; 2,500 more than the number registered in 2006. However in 1976 there was 13% fewer people in the population than there are now and those aged 75 and over represented 4% of the population in 1976 compared with 6% now;
- the overall death rate in Northern Ireland has fallen significantly over the last thirty years from 11 deaths per 1,000 population in 1976 to 8 deaths per 1,000 population in 2006. The death rate for Northern Ireland since 1976 is shown in Chart 1 below;
- if the age-specific mortality rates of 1976 were applied to the current population, the number of deaths would have been 11,000 higher than the actual number registered last year;

Chart 1: Death Rate per 1,000 population (1976 to 2006) - non-zero y axis



Age at Death

- in 1976, 14% of all deaths were to those aged 85 years and over, while in 2006 this figure rose to 30% of all deaths;
- in 1976, 22% of all deaths were to those of working age, while in 2006 this figure reduced to 17% of all deaths;
- the average age at death in 2006 was 70.8 years for males and 77.8 years for females, an increase of six years on the average age at death for males in 1976 and seven years for females;

Mortality by gender and marital status

- female deaths (7,470) outnumbered male deaths (7,062) in 2006, giving a ratio of 106 female deaths for every 100 male deaths;
- of men whose deaths were registered during 2006, 52 per cent were married at the time of death, while 23 per cent were widowed and 20 per cent were single. In contrast, of women whose deaths were registered during 2006, 55 per cent were widows at the time of death, with a further 25 per cent married and 17 per cent single;

Deaths by area

- at Health Board level, death rates ranged from 7.6 deaths per 1,000 population in the Western Board area to 9.2 deaths per 1,000 population in the Eastern Board area;
- Belfast Local Government District had the highest death rate (10.5 deaths per 1,000 population) of all Local Government Districts while the lowest death rate (6.6) was in Limavady Local Government District;

Cause of death

- cancer, circulatory diseases and respiratory diseases accounted for nearly three-quarters of all deaths in 2006;
- last year over half of all deaths were attributed to the three specific causes; cancer (3,848 deaths), ischaemic heart disease (2,556 deaths) and stroke (1,326 deaths);

Cancer

- over the last decade the number of deaths due to cancer has remained broadly constant at around 3,700 deaths. However last year there was a small increase from 3,735 deaths due to cancer in 2005 to 3,848 deaths due to cancer in 2006;
- given the overall fall in the death rate and the stable number of deaths due to cancer, this means that cancer is becoming more important. Last year cancer represented 26% of all deaths registered compared to 17% of all deaths in 1976;

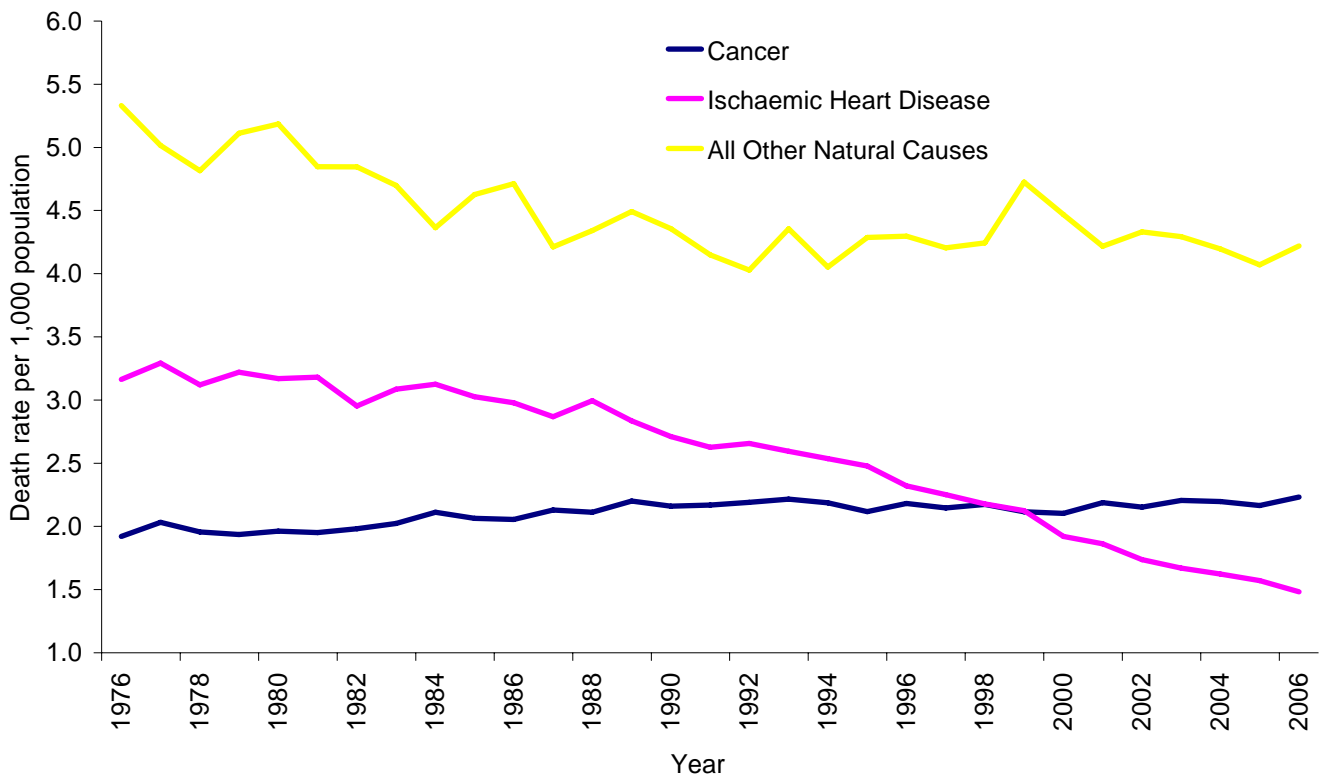
Ischaemic Heart Disease

- in 2006, 2,556 people died from ischaemic heart disease (ICD10 codes I20-I25), this continues the long-term fall in deaths due to heart disease. As a contrast there were nearly twice the number of deaths due to ischaemic heart disease (4,820) in 1976 than there was last year;

Respiratory Disease

- in 2006, 1,982 people died from respiratory diseases (ICD10 codes J00-J99) a similar figure to that seen in 1976 (1,976 deaths), however during the late 1990s the number of deaths from respiratory diseases had been as high as 3,100 deaths. Part of the drop seen in the numbers since 2001 is associated with a change in the coding rules for pneumonia that were implemented when ICD10 was introduced;

Chart 2: Death Rate for Cancer, Ischaemic Heart Disease and all other Natural Causes of Death per 1,000 population (1976 to 2006) - non-zero y axis



Alcohol related deaths

- in 2006, a total of 248 people died from alcohol related deaths; 173 males and 75 females. This is a marked increase from the equivalent 1996 figure of 141 deaths;

Suicide

- in the UK deaths classified as ‘events of undetermined intent’ along with ‘intentional self-harm’ are jointly reported as suicide. In 2006 there were 291 such deaths here, 227 were male suicides and 64 were female suicides. This is a marked rise on the number registered in 2005 when 213 suicides were recorded (167 males and 46 females);
- suicides are referred to the coroner and take time to be fully investigated. Therefore there is often a period of time between when the suicide occurs and when it is registered. Of the 291 suicides registered in 2006, only 72 occurred in 2006 with the remainder occurring in earlier years;

- Table 1 below compares the number of suicides registered each year with the number of suicides occurring in those years. There are likely to be a significant number of deaths that occurred after 2004 but which have not yet been registered;

Table 1: Number of suicides registered and actual number occurring (1996-2006)

Year	Suicides (Registered)	Suicides (Occurred)*
1996	143	161
1997	138	153
1998	150	180
1999	154	163
2000	185	186
2001	158	176
2002	183	193
2003	144	152
2004	146	208
2005	213	*
2006	291	*

* See comment above

Stillbirths and infant deaths

- there were 89 stillbirths and 121 infant deaths registered in Northern Ireland in 2006. Over the past 30 years the number of stillbirths and infant deaths have fallen by around 70%;
- the stillbirth rate has reduced from 10.4 stillbirths per 1,000 births (live and still) in 1976 to 3.8 in 2006. This fall happened despite a change in the definition of stillbirths in 1992, which reduced the minimum period of gestation from 28 weeks to 24 weeks (thus increasing the number of stillbirths). The infant death rate (deaths of children aged under 1) has fallen from 18.3 infant deaths per 1,000 live births in 1976 to 5.1 in 2006.

Also included are a number of tables – these are listed below:

Table 2 Registered deaths and stillbirths 1976, 1986, 1996 to 2006

Table 3 Registered deaths and stillbirths by area, 2006

Table 4 Deaths by major cause of death, 2001 to 2006

Table 5 Deaths by area 1976, 1986, 1996, 2000 to 2006

Table 2 Vital events, 1976, 1986, 1996 to 2006 (Stillbirths and Deaths)

Year	Estimated Population	Stillbirths		Deaths									
				Persons		Infant Deaths		Cause of Death ⁴			Age at Death		
								Cancer	Ischaemic Heart Disease	Respiratory Diseases	Male Median	Female Median	% aged 85 and over
Number	Rate ¹	Number	Rate ²	Number	Rate ³	Number	Number	Number					
1976	1,523,500	278	10.4	17,030	11.2	483	18.3	2,926	4,820	1,976	70	75	14.1
1986	1,573,500	125	4.4	16,065	10.2	286	10.2	3,234	4,686	2,581	72	78	18.5
1996	1,661,800	153	6.2	15,218	9.2	142	5.8	3,623	3,856	2,749	74	80	23.9
1997	1,671,300	131	5.4	14,971	9.0	137	5.6	3,589	3,764	2,665	74	80	24.8
1998	1,677,800	122	5.1	14,993	8.9	134	5.6	3,648	3,654	2,627	74	81	25.9
1999	1,679,000	132	5.7	15,663	9.3	148	6.4	3,552	3,568	3,161	75	81	27.1
2000	1,682,900	93	4.3	14,903	8.9	109	5.0	3,541	3,234	3,019	75	80	27.0
2001	1,689,300	112	5.1	14,513	8.6	134	6.0	3,696	3,148	1,975	75	81	27.7
2002	1,696,600	122	5.7	14,586	8.6	100	4.6	3,652	2,948	1,883	75	81	27.8
2003	1,702,600	108	5.0	14,462	8.5	115	5.2	3,757	2,843	2,082	75	81	28.2
2004	1,710,300	113	5.0	14,354	8.4	122	5.3	3,757	2,775	1,950	75	81	27.2
2005	1,724,400	89	4.0	14,224	8.2	140	6.1	3,735	2,708	1,921	75	81	28.3
2006 ^P	NA	89	3.8	14,532	8.4	121	5.1	3,848	2,556	1,982	75	81	29.6

^P Provisional.

¹ Rate per 1,000 live and stillbirths.

² Rate per 1,000 population. Rate for 2006 calculated using 2005 mid-year estimates of population.

³ Rate per 1,000 live births (including non-residents).

⁴ From 2001 cause of death is classified using the tenth revision of the International Statistical Classification of Diseases, Injuries and Causes of Death (ICD10). Previous years were coded in the ninth revision (1979-2001) and eight revision (1970-1978).

Table 3 Deaths, stillbirths and major causes of death (ICD10) by Health Board and Local Government District, 2006 (Provisional)

Area	Deaths					Still- births	Cause of Death							
	Total	Male	Female	Death Rate ¹	Infants		Malignant Neoplasms (C00-C97)	Circulatory Diseases			Respir- atory Diseases (J00-J99)	External Causes		
								Total (I00- I99)	Ischaemic Heart Disease (I20-I25)	Cerebro- vascular Disease (I60-I69)		Total (V01-Y98)	Transport Accidents (V01-V99)	Suicide, self-inflicted injury & undetermined intent (X60-X84, Y10-Y34, Y87.0, Y87.2)
Northern Ireland	14,532	7,062	7,470	8.4	121	89	3,848	4,878	2,555	1,326	1,982	853	187	291
Eastern Board	6,130	2,874	3,256	9.2	44	41	1,634	2,023	1,033	574	863	317	40	106
Ards	660	303	357	8.8	5	5	171	226	120	68	111	22	2	9
Belfast	2,803	1,307	1,496	10.5	14	15	765	929	471	256	396	146	17	59
Castlereagh	582	269	313	8.9	5	3	139	192	93	61	85	30	5	5
Down	549	250	299	8.1	8	4	134	197	107	49	67	34	5	12
Lisburn	828	418	410	7.4	5	7	232	268	140	77	101	51	6	17
North Down	708	327	381	9.0	7	7	193	211	102	63	103	34	5	4
Northern Board	3,606	1,772	1,834	8.2	27	14	957	1,280	668	341	476	185	49	67
Antrim	364	174	190	7.2	4	2	93	128	64	47	50	24	6	8
Ballymena	534	255	279	8.8	5	1	132	190	92	54	74	20	5	11
Ballymoney	226	118	108	7.9	2	1	60	88	51	21	25	9	3	2
Carrickfergus	340	170	170	8.7	1	0	97	104	59	27	57	16	2	5
Coleraine	456	217	239	8.1	2	2	142	156	78	42	62	13	4	6
Cookstown	283	159	124	8.3	6	1	69	113	66	28	26	26	6	9
Larne	305	146	159	9.8	2	2	77	111	59	25	43	15	4	5
Magherafelt	287	140	147	6.9	0	4	74	115	59	31	28	25	14	7
Moyle	162	76	86	9.8	0	0	39	63	27	13	20	9	1	4
Newtownabbey	649	317	332	8.0	5	1	174	212	113	53	91	28	4	10
Southern Board	2,585	1,304	1,281	7.9	28	18	687	880	480	226	311	176	51	49
Armagh	476	235	241	8.5	6	1	118	167	88	53	62	31	14	8
Banbridge	322	159	163	7.2	4	4	78	111	57	30	44	24	3	9
Craigavon	650	322	328	7.7	6	5	177	229	129	54	85	35	6	8
Dungannon	409	215	194	8.1	4	3	110	134	74	35	42	42	17	7
Newry & Mourne	728	373	355	8.0	8	5	204	239	132	54	78	44	11	17
Western Board	2,211	1,112	1,099	7.6	22	16	570	695	374	185	332	175	47	69
Fermanagh	540	263	277	9.0	6	2	139	168	94	45	78	36	15	13
Limavady	227	118	109	6.6	0	1	60	80	49	13	39	17	5	5
Derry	776	388	388	7.2	7	6	213	242	119	73	110	60	8	28
Omagh	371	179	192	7.3	7	3	78	122	69	30	51	33	14	8
Strabane	297	164	133	7.7	2	4	80	83	43	24	54	29	5	15

¹Rate per 1,000 population. Estimate for 2006 calculated using 2005 mid-year estimates of population.

Table 4 Deaths by major cause of death (ICD10) 2001 to 2006^P

ICD10 Code	Cause of Death	Year					
		2001	2002	2003	2004	2005	2006 ^P
A00-Y98	All Causes of Death	14,513	14,586	14,462	14,354	14,224	14,532
A00-B99	Certain Infectious and Parasitic Diseases	117	134	157	149	162	188
C00-D48	Neoplasms	3,802	3,766	3,882	3,835	3,826	3,959
C00-C97	Malignant Neoplasms	3,696	3,652	3,757	3,757	3,735	3,848
D50-D89	All Diseases of the Blood and Blood Forming Organs and Certain Disorders Involving the Immune Mechanism	32	24	37	34	36	31
E00-E90	Endocrine, Nutritional and Metabolic Diseases	200	238	246	248	302	281
F00-F99	Mental and Behavioural Disorders	381	411	341	370	408	418
G00-H95	Diseases of the Nervous System and the Sense Organs	467	531	481	487	484	557
I00-I99	Disease of the Circulatory System	5,829	5,729	5,448	5,272	5,002	4,879
I20-I25	Ischaemic Heart Disease	3,148	2,948	2,843	2,775	2,708	2,556
I60-I69	Cerebrovascular Disease	1,531	1,573	1,531	1,435	1,307	1,326
J00-J99	Diseases of the Respiratory System	1,975	1,883	2,082	1,950	1,921	1,982
K00-K93	Diseases of the Digestive System	556	581	587	691	584	644
L00-M99	All Diseases of Skin, Musculoskeletal System and Connective Tissue	118	111	108	85	115	100
N00-N99	Diseases of the Genitourinary System	278	333	327	364	351	361
O00-O99	Pregnancy, Childbirth and the Puerperium	2	1	3	1	1	3
P00-P96	Certain Conditions Originating in the Perinatal Period	63	62	62	64	81	54
Q00-Q99	Congenital Malformations, Deformations and Chromosomal Abnormalities	83	53	69	61	82	84
R00-R99	Signs, Symptoms and Abnormal Clinical and Laboratory Findings, N.E.C.	65	92	82	100	108	138
V01-Y98	All External Causes of Morbidity and Mortality	545	637	550	643	761	853
V01-V99	Transport Accidents	148	147	123	161	175	187
X60-X84, Y87.0, Y10-Y34, Y87.2	Suicide, Self-Inflicted Injury and Events of Undetermined Intent	158	183	144	146	213	291

^P Provisional

Table 5 Deaths by Health Board and Local Government District, 1976, 1986, 1996, 2000 to 2006^P

Area	Deaths									
	1976	1986	1996	2000	2001	2002	2003	2004	2005	2006 ^P
Northern Ireland	17,030	16,065	15,218	14,903	14,513	14,586	14,462	14,354	14,224	14,532
Eastern Board	7,950	7,165	6,783	6,517	6,284	6,379	6,289	6,148	6,184	6,130
Ards	605	625	670	670	643	657	653	699	673	660
Belfast	4821	3674	3199	3106	2887	2935	2843	2794	2761	2,803
Castlereagh	416	791	679	639	639	635	631	598	632	582
Down	590	602	601	513	534	514	547	495	545	549
Lisburn	776	761	828	822	816	891	857	813	825	828
North Down	742	712	806	767	765	747	758	749	748	708
Northern Board	3,613	3,627	3,666	3,621	3,490	3,524	3,513	3,540	3,543	3,606
Antrim	295	360	393	391	351	380	370	376	338	364
Ballymena	598	587	561	508	525	516	526	487	508	534
Ballymoney	211	230	211	211	208	209	187	226	209	226
Carrickfergus	278	286	307	318	335	324	315	308	332	340
Coleraine	521	472	514	471	466	460	453	519	490	456
Cookstown	271	243	254	274	241	230	215	240	279	283
Larne	337	299	294	309	272	283	309	300	295	305
Magherafelt	301	290	298	277	267	278	288	259	285	287
Moyle	153	160	136	144	163	145	146	146	142	162
Newtownabbey	648	700	698	718	662	699	704	679	665	649
Southern Board	2,943	2,733	2,479	2,590	2,512	2,479	2,442	2,518	2,370	2,585
Armagh	501	461	477	496	461	444	385	436	398	476
Banbridge	323	333	320	349	334	343	335	324	294	322
Craigavon	786	673	581	649	637	654	654	650	597	650
Dungannon	493	497	422	411	394	372	389	394	414	409
Newry & Mourne	840	769	679	685	686	666	679	714	667	728
Western Board	2,524	2,540	2,290	2,175	2,227	2,204	2,218	2,148	2,127	2,211
Fermanagh	621	591	578	521	580	540	541	586	536	540
Limavady	215	228	196	231	215	217	208	221	228	227
Derry	832	842	790	740	714	775	771	747	744	776
Omagh	477	539	404	399	398	365	373	324	360	371
Strabane	379	340	322	284	320	307	325	270	259	297

^P Provisional

NOTE FOR EDITORS

1. These provisional figures have been compiled from returns furnished by the local registrars. Final figures are published in the Annual Report of the Registrar General.
2. The results are based on analysis of events registered within the 2006 calendar year. Some events may have occurred prior to this registration year; this is especially the case with events that are likely to be referred to the coroner and thus take some time to be registered.
3. Cause of death is classified using the tenth revision of the International Statistical Classification of Diseases, Injuries and Causes of Death (ICD10). As is convention, deaths classified under ICD10 as 'events of undetermined intent' along with 'intentional self-harm' are jointly reported as 'suicide'.
4. All media inquiries should directed to:
DFP Press Office
Telephone: 028 9052 7374